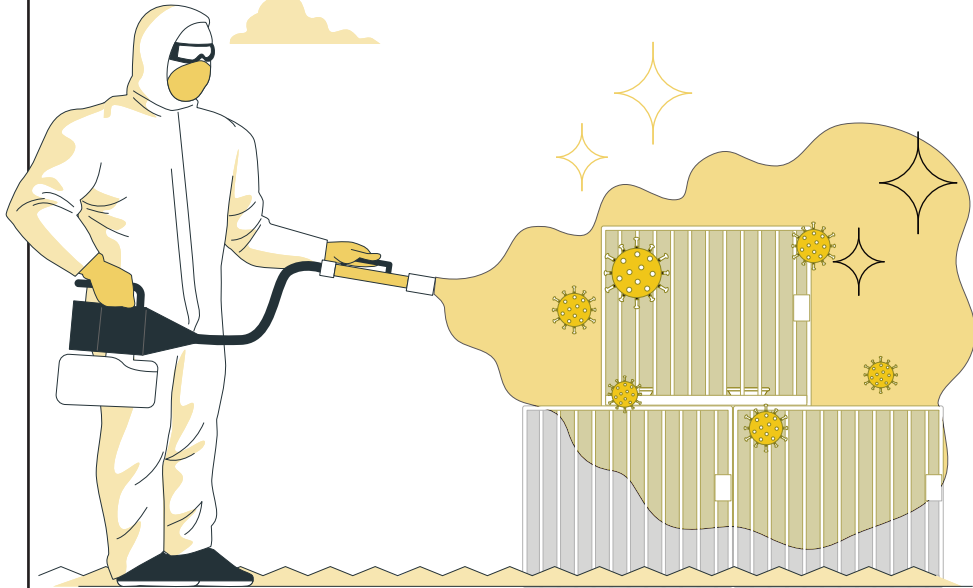
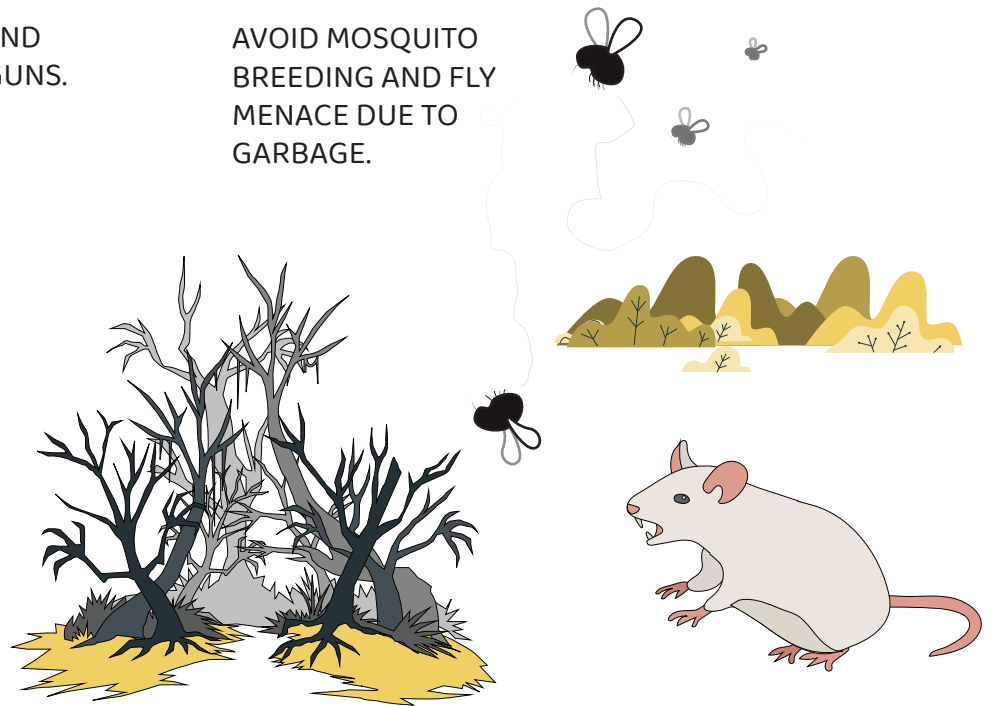


# SPACE SANITATION

CLEANING OF SHEDS AND CAGES, FLOORS AND WALLS USING DISINFECTANTS AND FLAME GUNS.



AVOID MOSQUITO BREEDING AND FLY MENACE DUE TO GARBAGE.



FOLLOW A PROCESS METHOD FOR CLEANING THAT IS APPROVED AND IDEAL FOR THE FARMS TO ENSURE SOME SAFETY.

REMOVING TREE BRANCHES AND FOLIAGE THAT MAYBE OVER THE FARM.

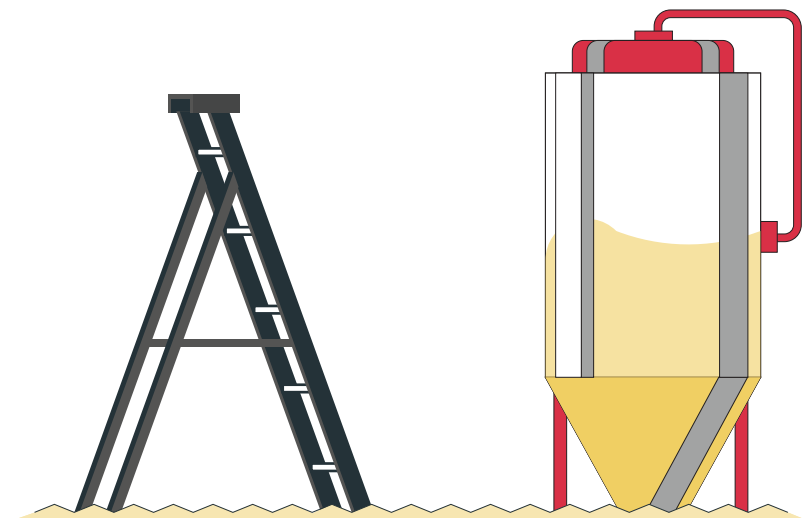
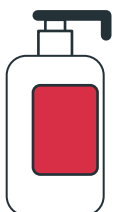
RODENTS AND WILD BIRDS HAVE TO BE KEPT AWAY FROM THE ANIMALS.

## EQUIPMENTS

THE FEEDERS AND WATERERS MUST BE CLEANED DAILY BEFORE GIVING FEED AND WATER.

THE WATERERS MUST BE WASHED USING DISINFECTANT SOLUTION.

THE FEEDERS SHOULD BE SCRAPPED DAILY TO REMOVE CAKES OF FEEDS.



LITTER MUST BE SPREAD WITH 12-15CM THICKNESS.

WOOD SHAVINGS ARE CONSIDERED ONE OF THE BEST LITTER MATERIALS. LITTER MUST NOT GET TOO MUCH WET.

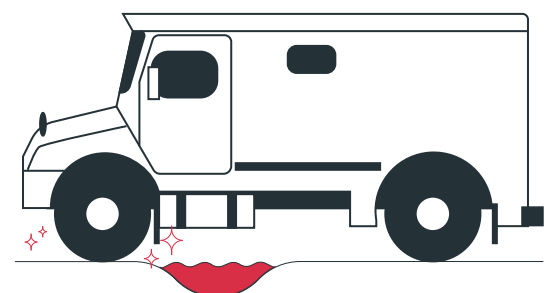
## VEHICLES



RESTRICT ENTRY TO THE FARM OF VEHICLES UNLESS AUTHORISED.



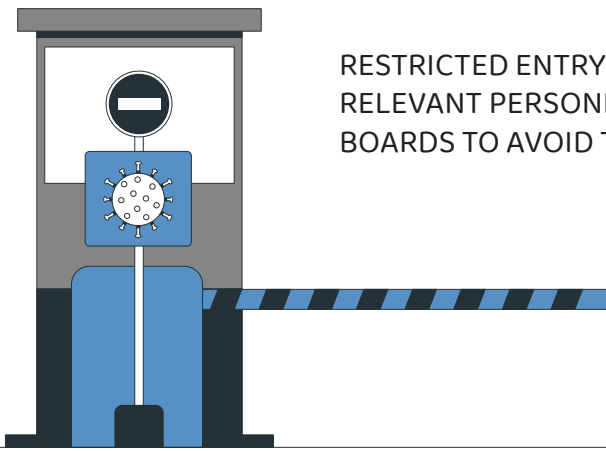
KEEP LOGS OF ALL THE VEHICLES THAT ENTER AND THEIR PURPOSE.



EVERY FARM SHOULD HAVE A PROVISION OF TYRE DIPS.



# BIO-SECURITY FOR PEOPLE



RESTRICTED ENTRY ONLY TO  
RELEVANT PERSONNEL, SIGN  
BOARDS TO AVOID TRESPASSING.



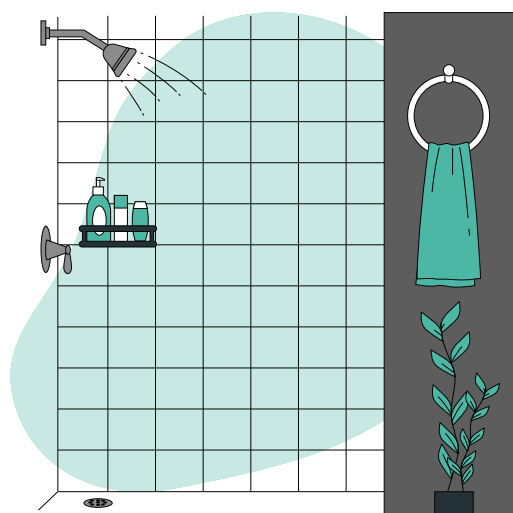
DOCUMENTATION AND  
LOGBOOK OF ALL THE  
PEOPLE THAT HAVE ACCESS.



SHOWERS AND SANITISERS AND  
SOAPS ARE A MUST FOR ALL THE  
EMPLOYEES AND WORKERS.



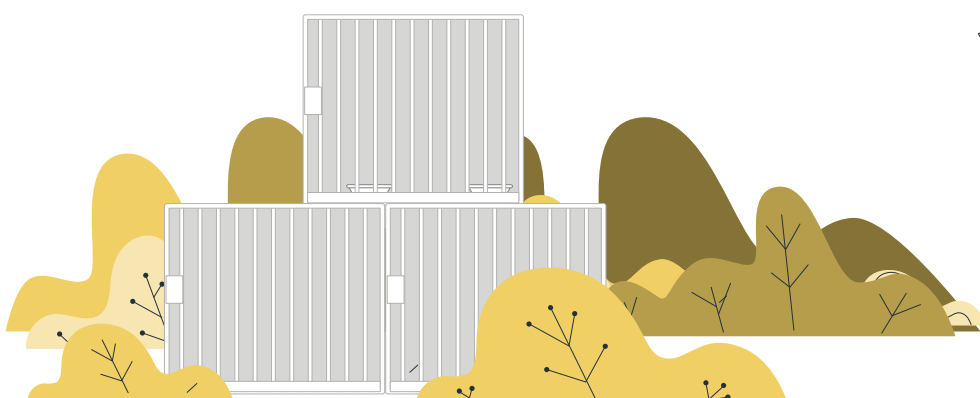
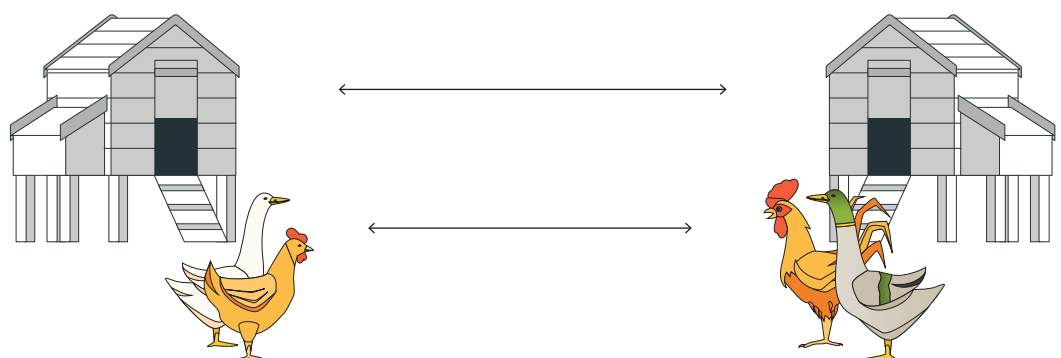
SAFETY GEAR, LIKE BOOTS, FOOT COVERS AND BODY SUIT IF NEEDED  
ARE A MUST FOR ALL THE VISITORS AND ANIMAL HANDLERS.



THERE SHOULD BE  
PROVISIONS OF A SEPARATE  
SET OF CLOTHING AND GEAR  
FOR ALL THE PEOPLE WHO  
WORK IN THE FARM.

## DIFFERENT AREAS OF FOCUS FOR PEOPLE

HANDLING AND MAINTAINING ANIMALS AND BIRDS  
OF DIFFERENT KINDS AND IN DIFFERENT SHEDS.



SANITATION, AND CLEANING OF THE SHEDS, PEST AND RODENT CONTROL.

JOBS REGARDING TO DISPOSAL  
OF LITTER, MANURE, CARCASS OF  
DEAD ANIMALS ETC.

